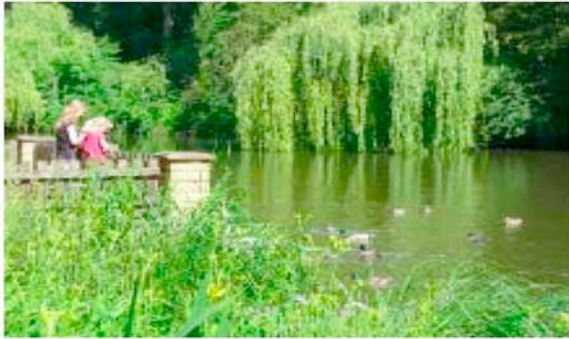


Case Study 2008 Lake "Swan", Germany



Description

The lake is located in a rural area and is used to be a place to have a rest for many people. The surface of the pond is approx. 3.000 m² and the average depth is 1.2m. The pond has a continuous inflow and effluent from a stream.

Situation before



The pond is suffering from high nutrient load due to countless water bird, fish and feeding by the visitors. The thick sludge layer on the bottom becomes anaerobic and generates bubbles. Scum and floating layers covering half of the lake surface, the water is turbid and smelly.

Treatment

Following product mixture was applied one time:

6kg Pond Relief
6L OxiPlus TR35 Oxygenator

Results



After 4 weeks, the scum, floating layers and smell were dissolved



After 6 Weeks the water was clear.